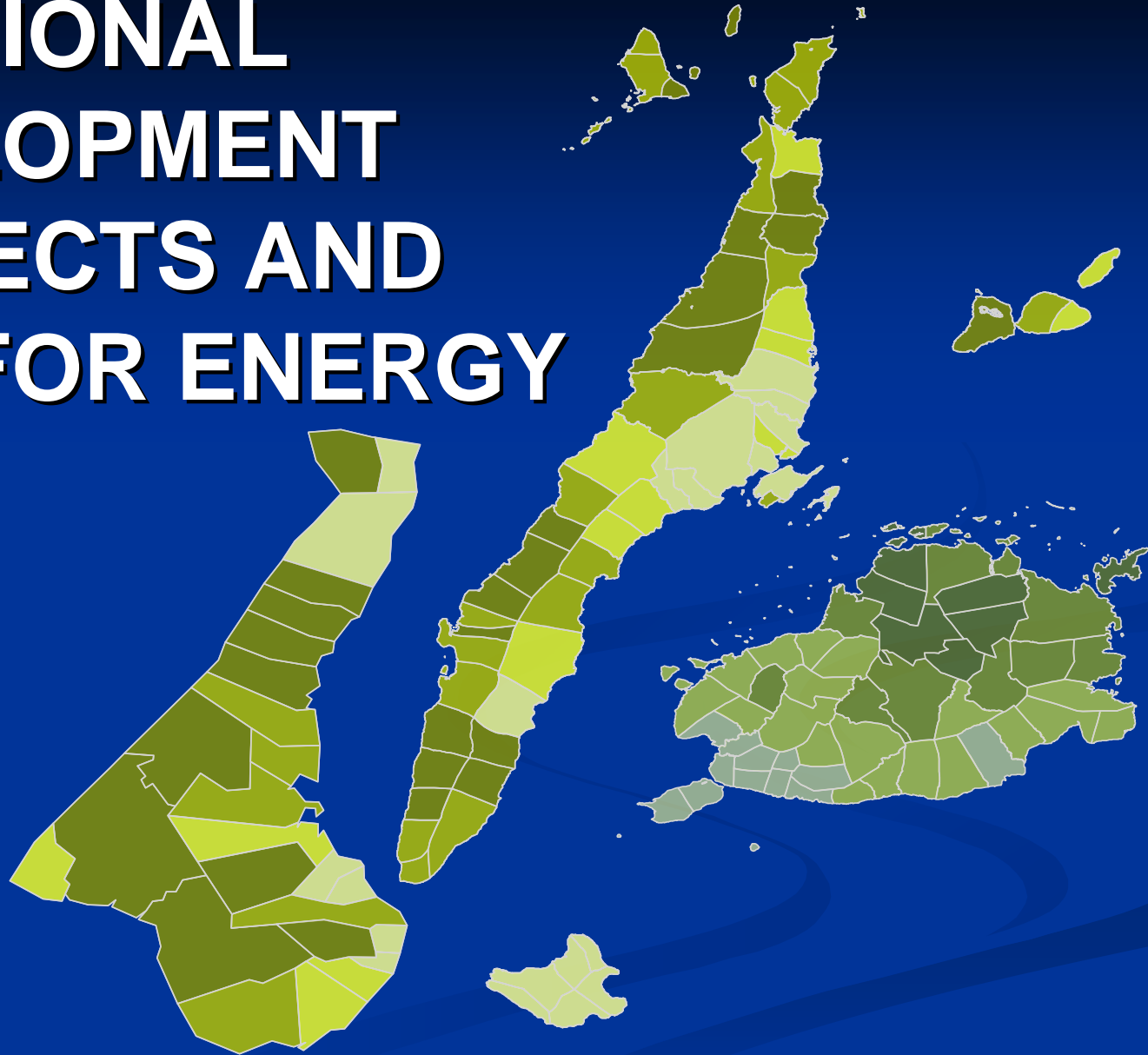


# REGIONAL DEVELOPMENT PROSPECTS AND DEMAND FOR ENERGY



**Marlene Ca P. Rodriguez**  
Regional Director, NEDA 7

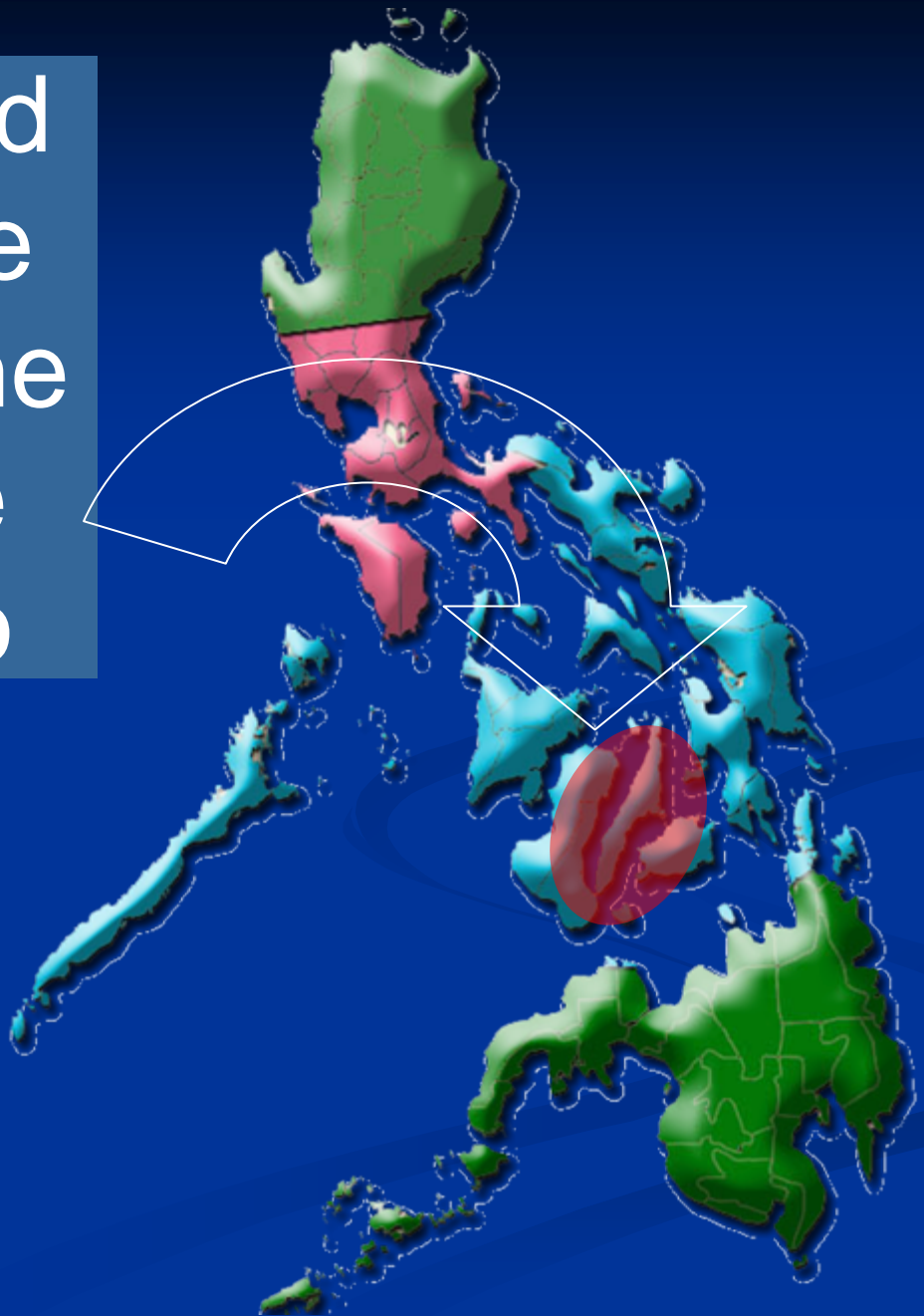
# LONG-TERM VISION

*By 2030, Central Visayas will be a leading growth center in the country, responsible for steering the economy of the Philippines to greater heights.*

# *Central Visayas takes pride in its comparative advantages*

- Strategic and disaster-free location
- Major infrastructure facilities in place
- Ready available economic zones
- Recognized learning center in South
- World class human resources
- Development-oriented and innovative leaders

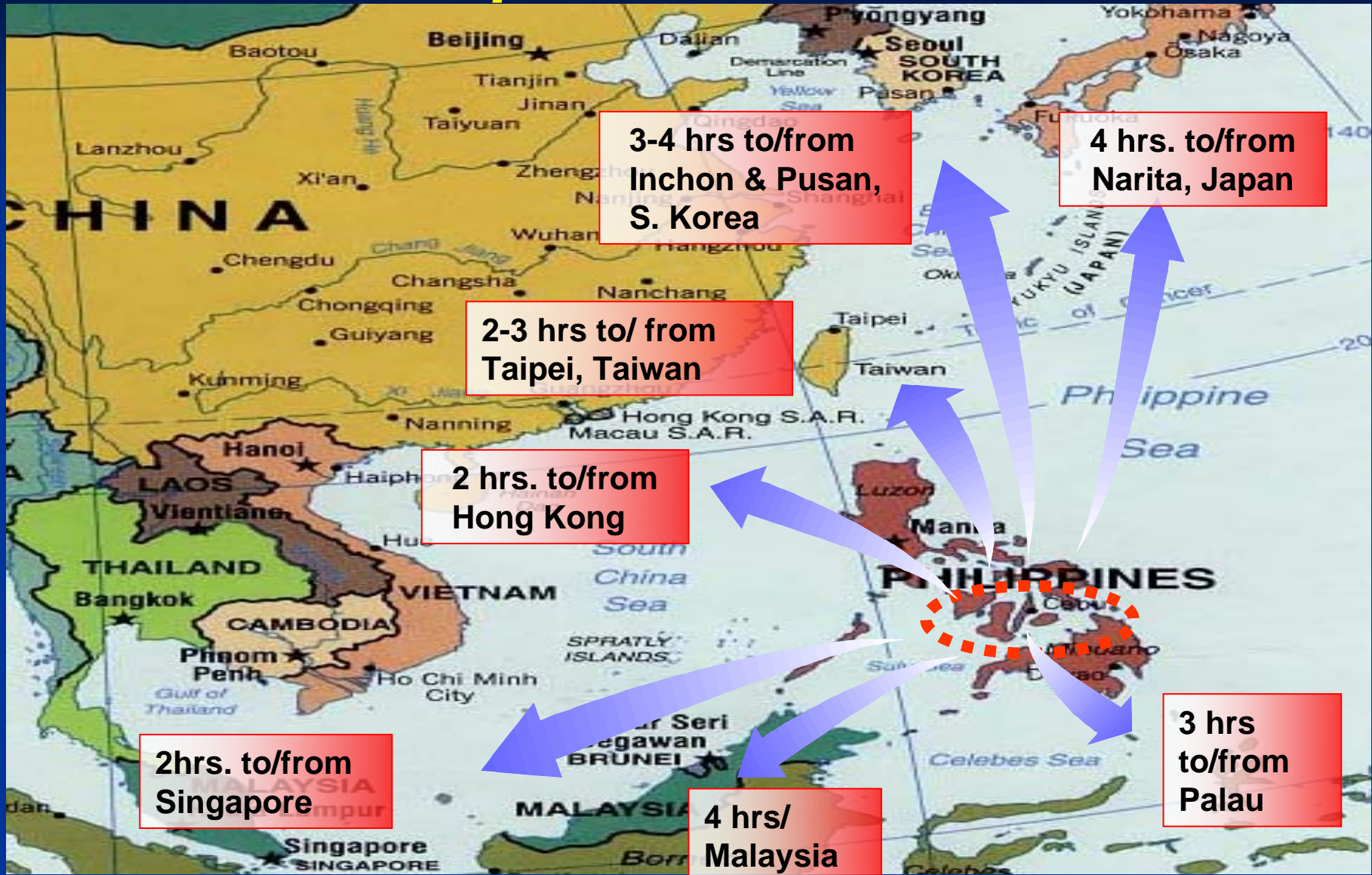
Strategic and  
disaster-free  
location at the  
heart of the  
archipelago



# Major support infra facilities in place

- International airport
- International port
- Roads and bridges
- Telecommunication facilities
- Convention centers, hotels, resorts

# ***International airport***





# ***International port***



# ***Roads and Bridges***





# ***Telecommunication Facilities***



**27** telecommunications service providers offering following:

- basic telephone or local exchange carrier services
- cellular, mobile telephone system services
- domestic and international record carrier services
- Very Small Aperture Terminal (VSAT)
- satellite links
- public trunk repeater
- international gateway facility services

# ***Convention centers, Hotels, Resorts***



# Ready, available economic zones



**3** *Public Economic Zones*

**4** *Private Economic Zones*

**19** *IT Parks and Buildings*

# State of the art medical facilities & equipment





# Recognized learning center in the South



**World-class human resource**

# Development-oriented & innovative leaders

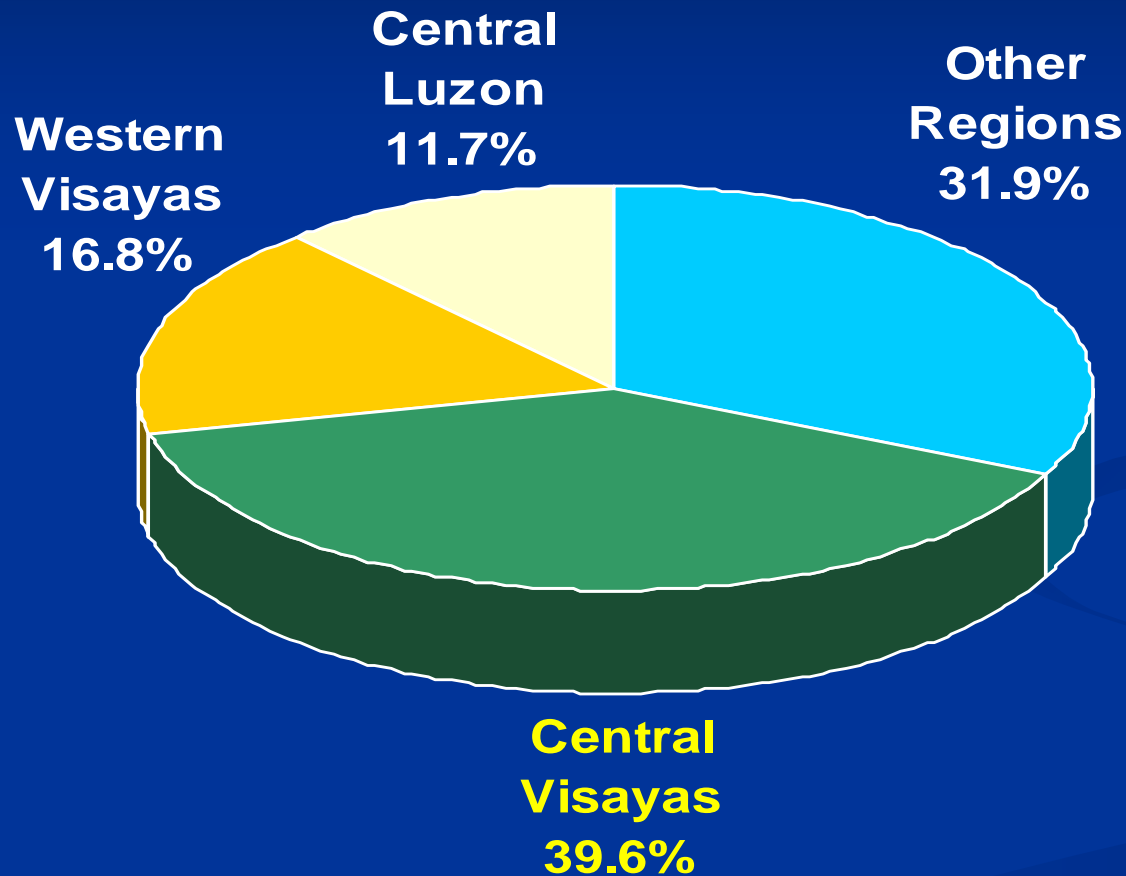




# *Central Visayas takes the **role** as...*

- Tourism center and gateway
- Trade hub
- Leading producer of IT & ICT products and services

# CV AS TOURISM CENTER AND GATEWAY

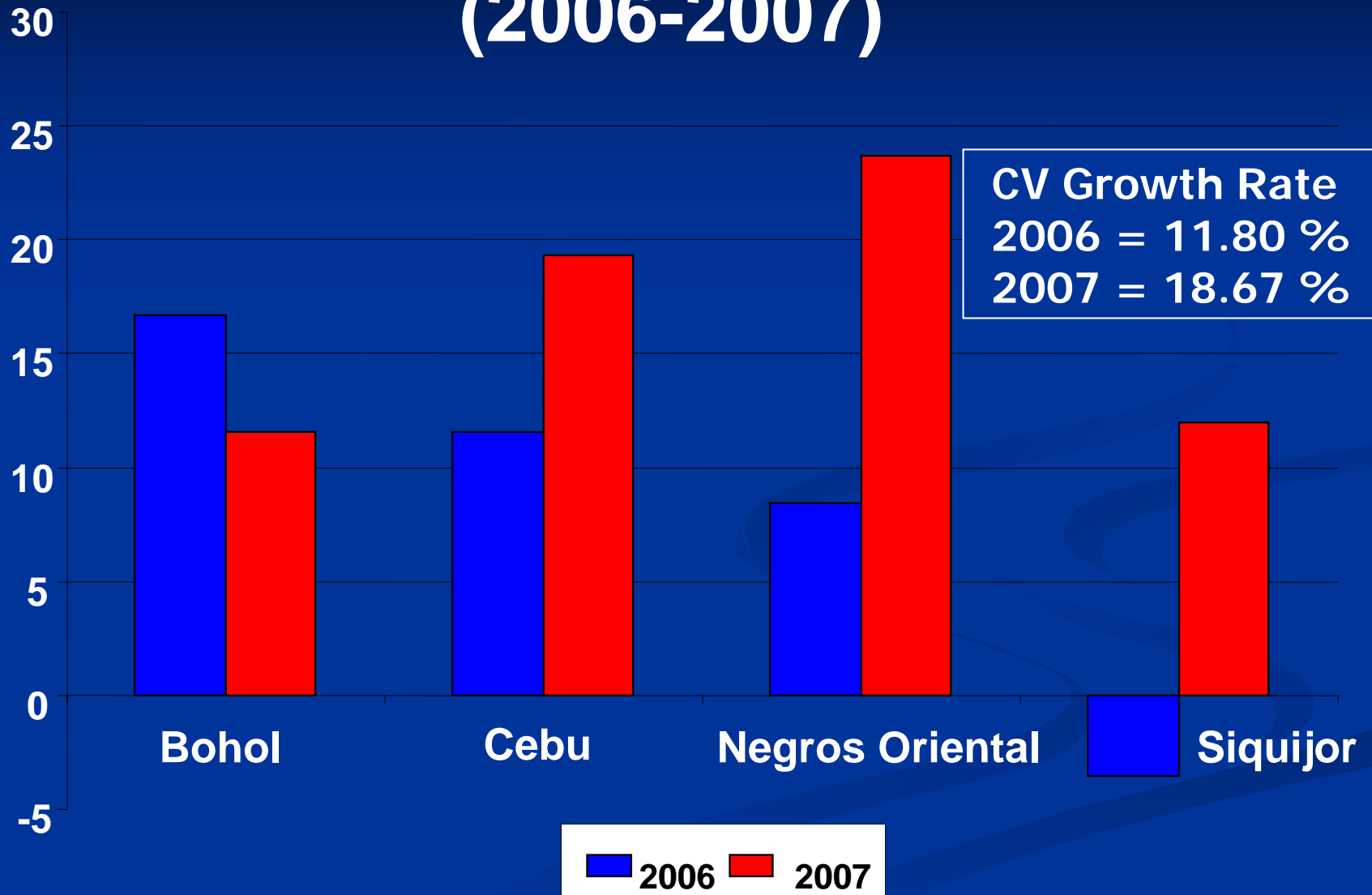


*Share in the  
number of  
foreign travelers*

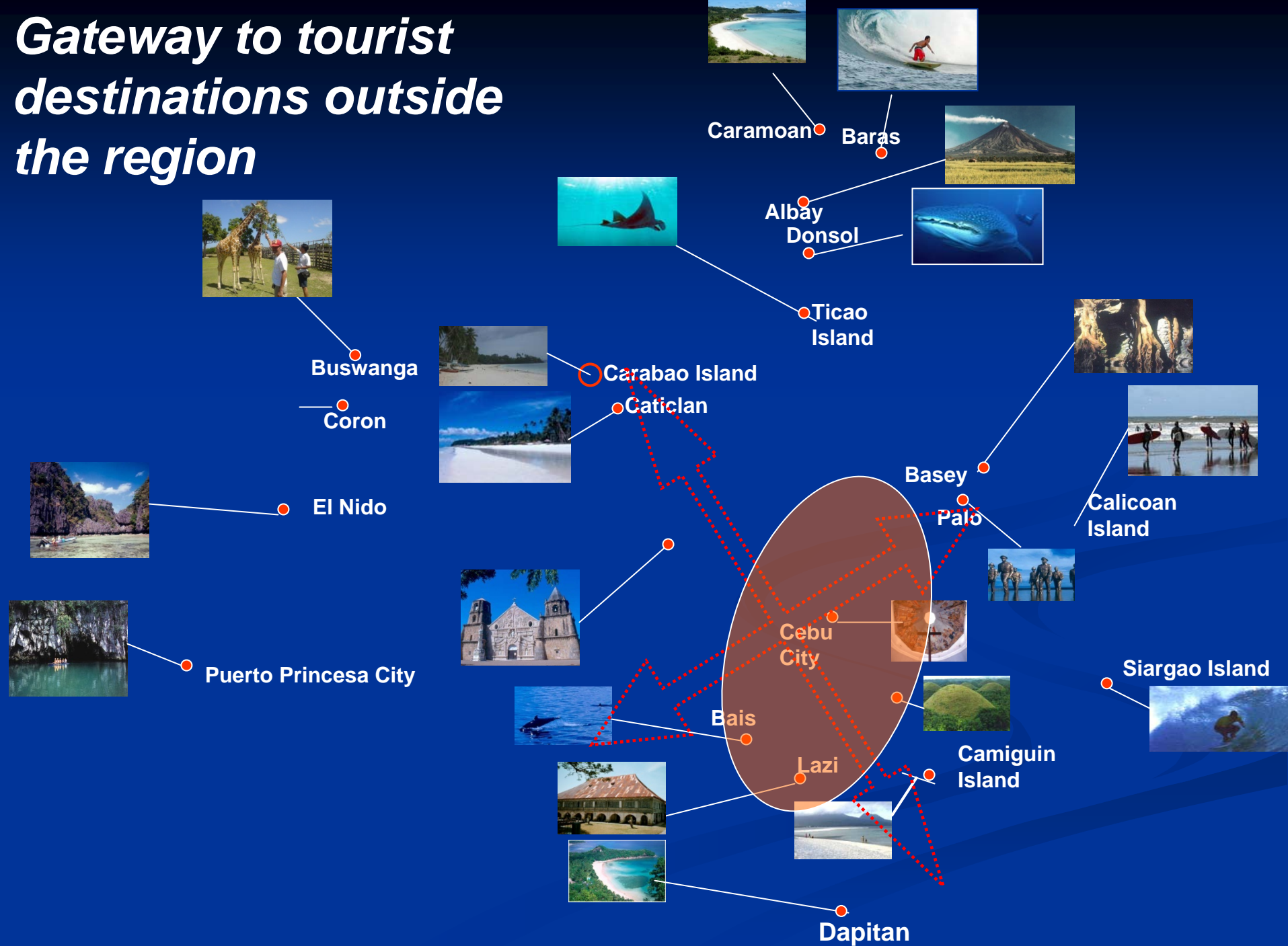
# Visitor Arrivals by Origin and Province, 2006 and 2007

Origin/Province	Visitor Arrivals		% Change	
	2006	2007	2005-2006	2006-2007
Total arrivals	1,633,160	1,938,111	11.80	18.67
Domestic	1,081,803	1,241,217	8.62	14.74
Foreign	551,357	696,894	20.03	26.40
By province				
Bohol	219,311	244,718	16.66	11.58
Cebu	1,247,487	1,488,908	11.57	19.35
Negros Or.	155,323	192,125	8.42	23.69
Siquijor	11,039	12,360	(3.55)	11.97

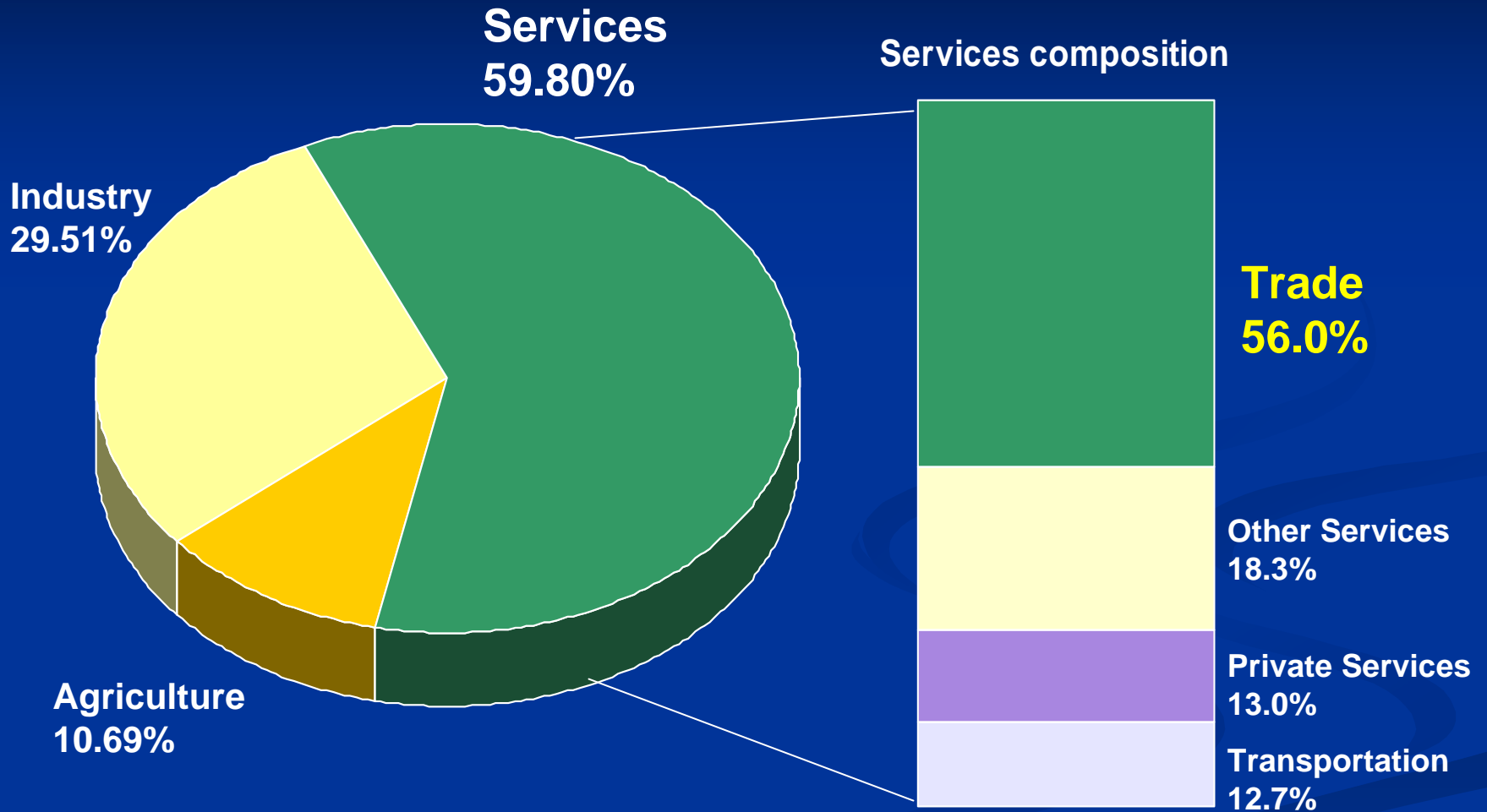
# Visitor Arrivals, by Province (2006-2007)



# Gateway to tourist destinations outside the region



# CV AS TRADE HUB





# Comparative Exports Value & Volume, 2006 and 2007

Port	Value (US\$ Million)			Volume ('000 MT)		
	2006	2007	% Change	2006	2007	% Change
TOTAL	3,726.05	4,922.73	32.1	-	-	-
Cebu	2,499.79	3,261.85	30.5	7,815.0	8,881.5	13.6
Mactan	1,203.98	1,617.82	34.4	-	-	-
Dgte	22.28	43.26	94.1	2,098.8	0.695	(66.9)

# ***Export Winners***

- Electronics
- Fashion accessories
- Furniture



# *Emerging world-class shipbuilder*



*Value of Exports, in US\$ million*

Period	Tsuneishi Heavy Industries	FBM-Aboitiz Babcock Marine
1997 – 2002	423.2	30.77
2003 – 2004	233.4	17.51
2005 – 2006	550.5	25.13
2007		31.65
<b>TOTAL</b>		<b>105.06</b>

# CV AS LEADING PRODUCER OF IT & ICT PRODUCTS AND SERVICES

- Central Visayas has 19 PEZA-registered IT parks/ centers, 2nd highest number in the country
- Established players expanding and new players joining

# CV AS LEADING PRODUCER OF IT & ICT PRODUCTS AND SERVICES

- Over 20 call centers
- Other ICT-enabled services available include: publishing, medical transcription, website designing and software development

**Expanding Population**

```
graph BT; A["ADEQUATE, RELIABLE, AFFORDABLE ENERGY"] --> B["Tourism center"]; A --> C["Trade hub"]; A --> D["IT leader"]; B --> E["Expanding Population"]; C --> E; D --> E;
```

The diagram illustrates a flow from a foundational energy requirement to three economic sectors, which then collectively drive population expansion. At the base is a box labeled 'ADEQUATE, RELIABLE, AFFORDABLE ENERGY'. Three arrows point upwards from this box to three separate rounded rectangular boxes: 'Tourism center', 'Trade hub', and 'IT leader'. From each of these three boxes, a longer arrow points upwards to a final box at the top labeled 'Expanding Population'.

**Tourism  
center**

**Trade hub**

**IT leader**

**ADEQUATE, RELIABLE,  
AFFORDABLE ENERGY**



# 2007 Population

Province	Population (In' 000)	%Share to Population
Bohol	1,230	19.2
Cebu	3,849	60.2
Negros Or.	1,232	19.2
Siquijor	88	1.4
CV	6,398	100.0
Philippines	88,570	7.2

# Energy Demand Forecast (MMBFOE)

Sector	2006	2010	2014
Industrial	3.25	3.83	4.55
Commercial	0.72	0.96	1.26
Residential	2.59	2.74	2.93
Transport	4.27	5.01	5.75
Agriculture	0.16	0.17	0.17
TOTAL	11.00	12.70	14.67



soaring to greater heights

Central Visayas ...

