

ANNEX A

Republic Act 11361- Anti-Obstruction of Power Lines Act Section 5: Power Line Corridor (PLC)

This Annex discusses and illustrates the required safety clearances for overhead lines which define the Power Line Corridor (PLC).

A. For Vegetation

In Figures A(1), A(2), and A(3) as shown below, **the PLC is bounded by points ABCDE and F**. There shall be **NO** tall growing plants from points **C** to **D**. The space bounded by points **A**, **B**, **E** and **F**, shall always be clear of any part of vegetations. **Points A** and **F** shall be extended as reference in pruning the farthest tall growing plants that will affect the integrity and reliability of the power lines.

Figures A(4), A(5), A(6) and A(7) show the requirements within the perimeter of the structure/utility pole.

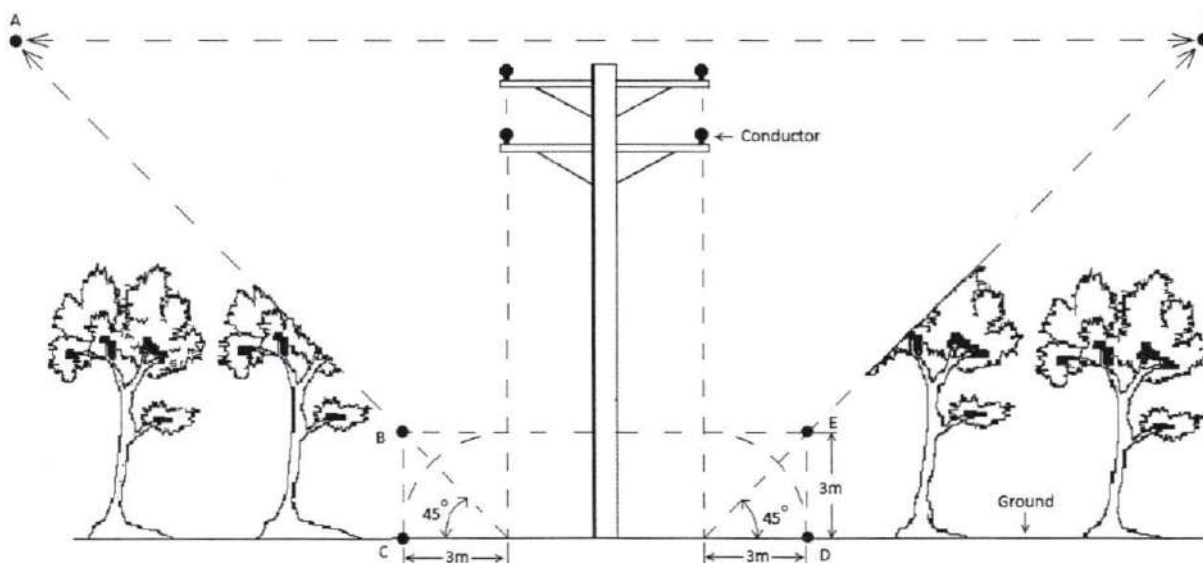
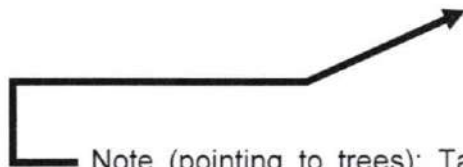


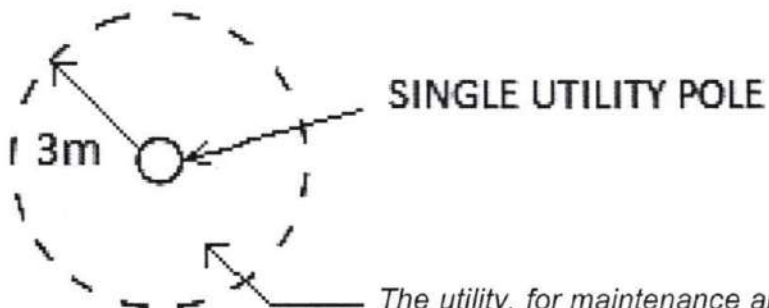
Figure A(1)



Note (pointing to trees): Tall growing plants within the PLC shall be allowed provided it will not affect the integrity and reliability of the power lines.

Figure A(4)

TOP VIEW



The utility, for maintenance and operational purposes, shall have the right to remove or trim/prune non tall growing plants encroaching within three (3) meters zone from the pole/structure at a height deemed appropriate by the utility.

Figure A(5)

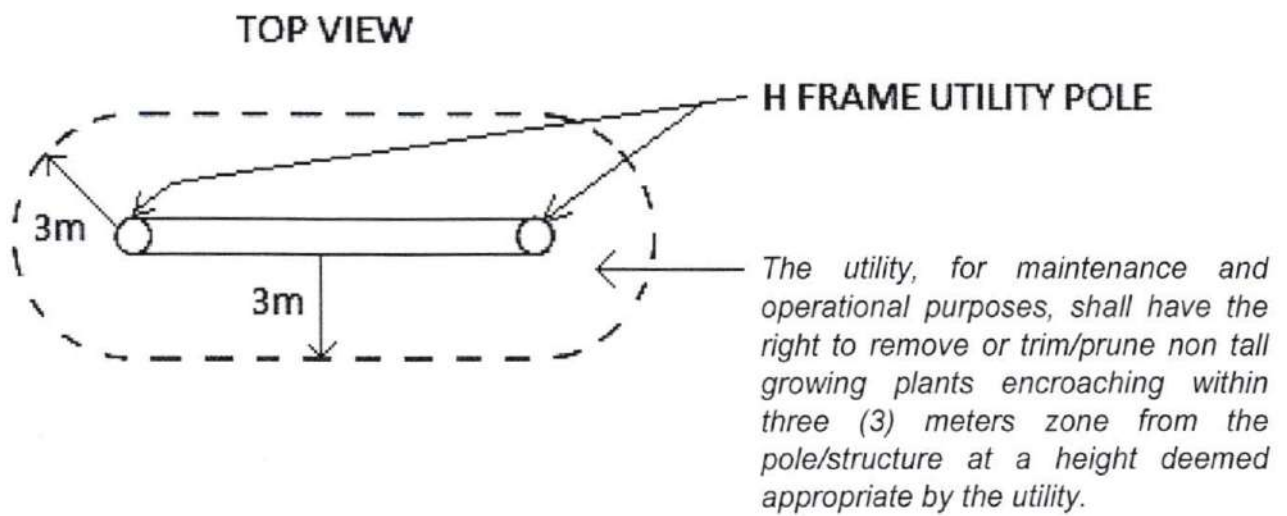


Figure A(6)

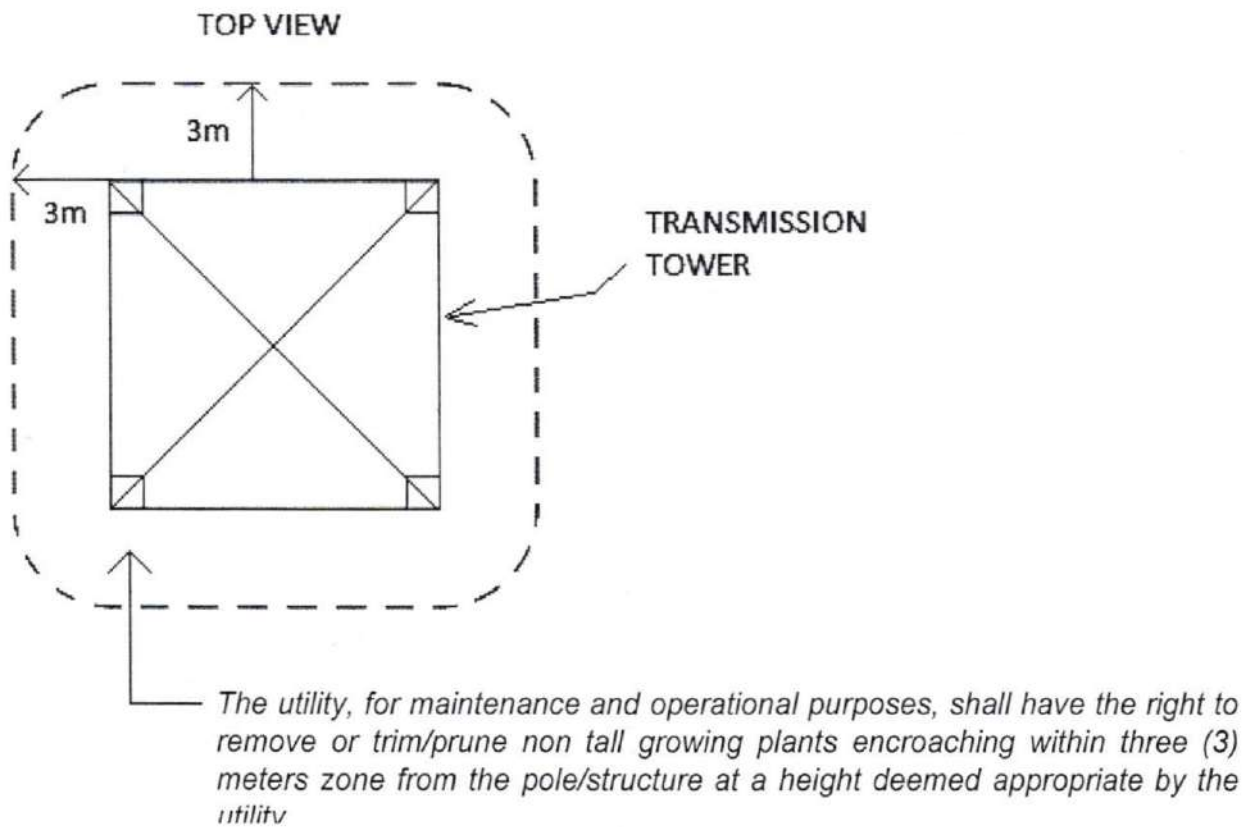


Figure A(7)

B. For Non-Hazardous Rigid Structure

The following tables below are the PLC between Non-Hazardous Rigid Structure and the power line conductor. The illustration of a, b, and c are shown in the figures.

Table B - PLC Clearances for Non-Hazardous Rigid Structures

Clearance of:	0 to 750 VAC Line-to-Ground (meters)		
	a	b	c
1. Building			
a. Horizontal			
(1) To walls, projections, and guarded windows	1.50		
(2) To unguarded windows	1.50		
(3) To balconies and areas readily accessible to pedestrians	1.50		
b. Vertical			
(1) Over or under roofs or projections not readily accessible to pedestrians		1.07	
(2) Over or under balconies, porches, decks, and roofs, readily accessible to pedestrians		3.40	
(3) Over roofs, ramps, decks, and loading docks accessible to vehicles but not subject to truck traffic		3.40	
(4) Over roofs, ramps, decks, and loading docks accessible to trucks		4.90	
2. Signs, chimneys, billboards, radio and television antennas, flagpoles and flags, banners, tanks, and other installations not classified as building or bridges			
a. Horizontal			
(1) To portions that are readily accessible to pedestrians	1.50		
(2) To portions that are not readily accessible to pedestrians	1.07		
b. Vertical			
(1) Over or under catwalks and other surfaces upon which personnel walk			3.40

Clearance of:	22 KVAC Line-to-Ground (meters)		
	a	b	c
1. Building			
a. Horizontal			
(1) To walls, projections, and guarded windows	2.30		
(2) To unguarded windows	2.30		
(3) To balconies and areas readily accessible to pedestrians	2.30		
b. Vertical			
(1) Over or under roofs or projections not readily accessible to pedestrians		3.80	
(2) Over or under balconies, porches, decks, and roofs, readily accessible to pedestrians		4.10	
(3) Over roofs, ramps, decks, and loading docks accessible to vehicles but not subject to truck traffic		4.10	
(4) Over roofs, ramps, decks, and loading docks accessible to trucks		5.60	
2. Signs, chimneys, billboards, radio and television antennas, flagpoles and flags, banners, tanks, and other installations not classified as building or bridges			
a. Horizontal			
(1) To portions that are readily accessible to pedestrians	2.30		
(2) To portions that are not readily accessible to pedestrians	2.30		
b. Vertical			
(1) Over or under catwalks and other surfaces upon which personnel walk			4.10

Clearance of:	69 KVAC Line-to-Line (meters)		
	a	b	c
1. Building			
a. Horizontal			
(1) To walls, projections, and guarded windows	2.48		
(2) To unguarded windows	2.48		
(3) To balconies and areas readily accessible to pedestrians	2.48		
b. Vertical			
(1) Over or under roofs or projections not readily accessible to pedestrians		3.98	
(2) Over or under balconies, porches, decks, and roofs, readily accessible to pedestrians		4.28	
(3) Over roofs, ramps, decks, and loading docks accessible to vehicles but not subject to truck traffic		4.28	
(4) Over roofs, ramps, decks, and loading docks accessible to trucks		5.78	
2. Signs, chimneys, billboards, radio and television antennas, flagpoles and flags, banners, tanks, and other installations not classified as building or bridges			
a. Horizontal			
(1) To portions that are readily accessible to pedestrians	2.48		
(2) To portions that are not readily accessible to pedestrians	2.48		
b. Vertical			
(1) Over or under catwalks and other surfaces upon which personnel walk			4.28

Clearance of:	115 KVAC Line-to-Line (meters)		
	a	b	c
1. Building			
a. Horizontal			
(1) To walls, projections, and guarded windows	2.78		
(2) To unguarded windows	2.78		
(3) To balconies and areas readily accessible to pedestrians	2.78		
b. Vertical			
(1) Over or under roofs or projections not readily accessible to pedestrians		4.28	
(2) Over or under balconies, porches, decks, and roofs, readily accessible to pedestrians		4.58	
(3) Over roofs, ramps, decks, and loading docks accessible to vehicles but not subject to truck traffic		4.58	
(4) Over roofs, ramps, decks, and loading docks accessible to trucks		6.08	
2. Signs, chimneys, billboards, radio and television antennas, flagpoles and flags, banners, tanks, and other installations not classified as building or bridges			
a. Horizontal			
(1) To portions that are readily accessible to pedestrians	2.78		
(2) To portions that are not readily accessible to pedestrians	2.78		
b. Vertical			
(1) Over or under catwalks and other surfaces upon which personnel walk			4.58

Clearance of:	138 KVAC Line-to-Line (meters)		
	a	b	c
1. Building			
a. Horizontal			
(1) To walls, projections, and guarded windows	2.92		
(2) To unguarded windows	2.92		
(3) To balconies and areas readily accessible to pedestrians	2.92		
b. Vertical			
(1) Over or under roofs or projections not readily accessible to pedestrians		4.42	
(2) Over or under balconies, porches, decks, and roofs, readily accessible to pedestrians		4.72	
(3) Over roofs, ramps, decks, and loading docks accessible to vehicles but not subject to truck traffic		4.72	
(4) Over roofs, ramps, decks, and loading docks accessible to trucks		6.22	
2. Signs, chimneys, billboards, radio and television antennas, flagpoles and flags, banners, tanks, and other installations not classified as building or bridges			
a. Horizontal			
(1) To portions that are readily accessible to pedestrians	2.92		
(2) To portions that are not readily accessible to pedestrians	2.92		
b. Vertical			
(1) Over or under catwalks and other surfaces upon which personnel walk			4.72

Clearance of:	230 KVAC Line-to-Line (meters)		
	a	b	c
1. Building			
a. Horizontal			
(1) To walls, projections, and guarded windows	3.49		
(2) To unguarded windows	3.49		
(3) To balconies and areas readily accessible to pedestrians	3.49		
b. Vertical			
(1) Over or under roofs or projections not readily accessible to pedestrians		4.99	
(2) Over or under balconies, porches, decks, and roofs, readily accessible to pedestrians		5.29	
(3) Over roofs, ramps, decks, and loading docks accessible to vehicles but not subject to truck traffic		5.29	
(4) Over roofs, ramps, decks, and loading docks accessible to trucks		6.79	
2. Signs, chimneys, billboards, radio and television antennas, flagpoles and flags, banners, tanks, and other installations not classified as building or bridges			
a. Horizontal			
(1) To portions that are readily accessible to pedestrians	3.49		
(2) To portions that are not readily accessible to pedestrians	3.49		
b. Vertical			
(1) Over or under catwalks and other surfaces upon which personnel walk			5.29

Clearance of:	500 KVAC Line-to-Line (meters)		
	a	b	c
1. Building			
a. Horizontal			
(1) To walls, projections, and guarded windows	5.26		
(2) To unguarded windows	5.26		
(3) To balconies and areas readily accessible to pedestrians	5.26		
b. Vertical			
(1) Over or under roofs or projections not readily accessible to pedestrians		6.76	
(2) Over or under balconies, porches, decks, and roofs, readily accessible to pedestrians		7.06	
(3) Over roofs, ramps, decks, and loading docks accessible to vehicles but not subject to truck traffic		7.06	
(4) Over roofs, ramps, decks, and loading docks accessible to trucks		8.56	
2. Signs, chimneys, billboards, radio and television antennas, flagpoles and flags, banners, tanks, and other installations not classified as building or bridges			
a. Horizontal			
(1) To portions that are readily accessible to pedestrians	5.26		
(2) To portions that are not readily accessible to pedestrians	5.26		
b. Vertical			
(1) Over or under catwalks and other surfaces upon which personnel walk			7.06

Clearance of:	350 KVDC Line-to-Ground (meters)		
	a	b	c
1. Building			
a. Horizontal			
(1) To walls, projections, and guarded windows	5.58		
(2) To unguarded windows	5.58		
(3) To balconies and areas readily accessible to pedestrians	5.58		
b. Vertical			
(1) Over or under roofs or projections not readily accessible to pedestrians		7.08	
(2) Over or under balconies, porches, decks, and roofs, readily accessible to pedestrians		7.38	
(3) Over roofs, ramps, decks, and loading docks accessible to vehicles but not subject to truck traffic		7.38	
(4) Over roofs, ramps, decks, and loading docks accessible to trucks		8.88	
2. Signs, chimneys, billboards, radio and television antennas, flagpoles and flags, banners, tanks, and other installations not classified as building or bridges			
a. Horizontal			
(1) To portions that are readily accessible to pedestrians	5.58		
(2) To portions that are not readily accessible to pedestrians	5.58		
b. Vertical			
(1) Over or under catwalks and other surfaces upon which personnel walk			7.38

Clearances between the Non-Hazardous Rigid Structure and the power line conductors

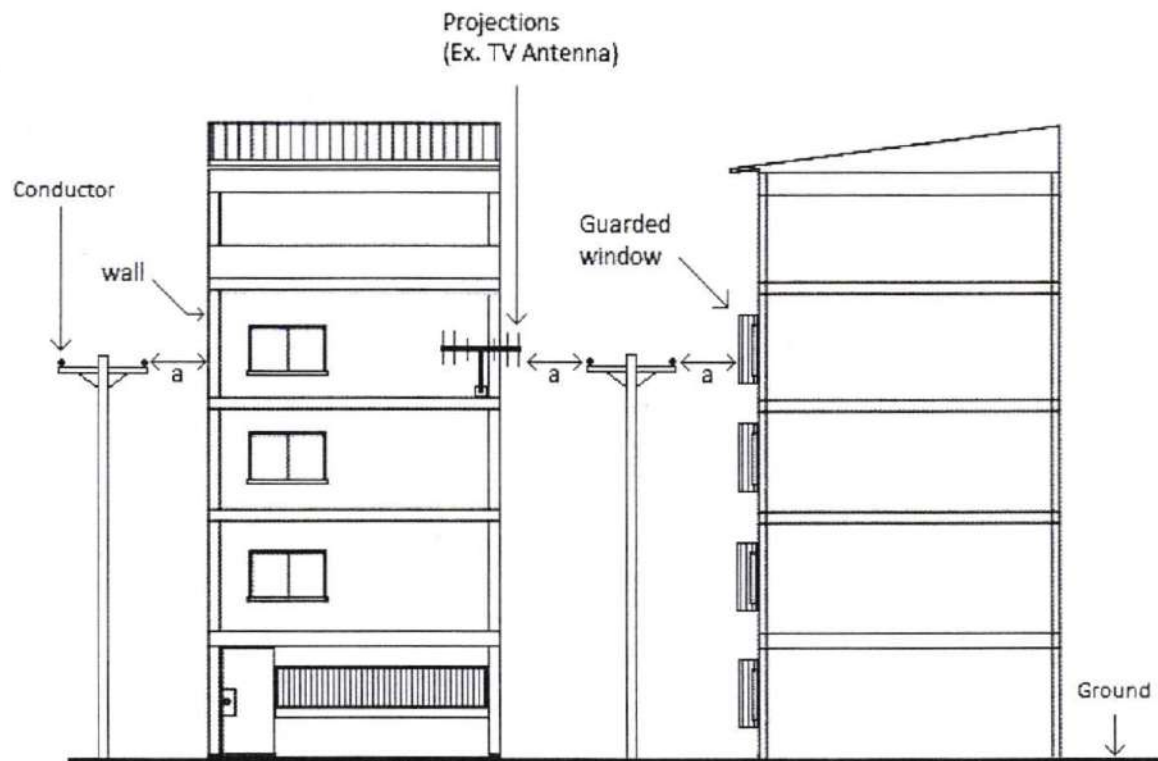


Figure 1a(1) To walls, projections, and guarded windows

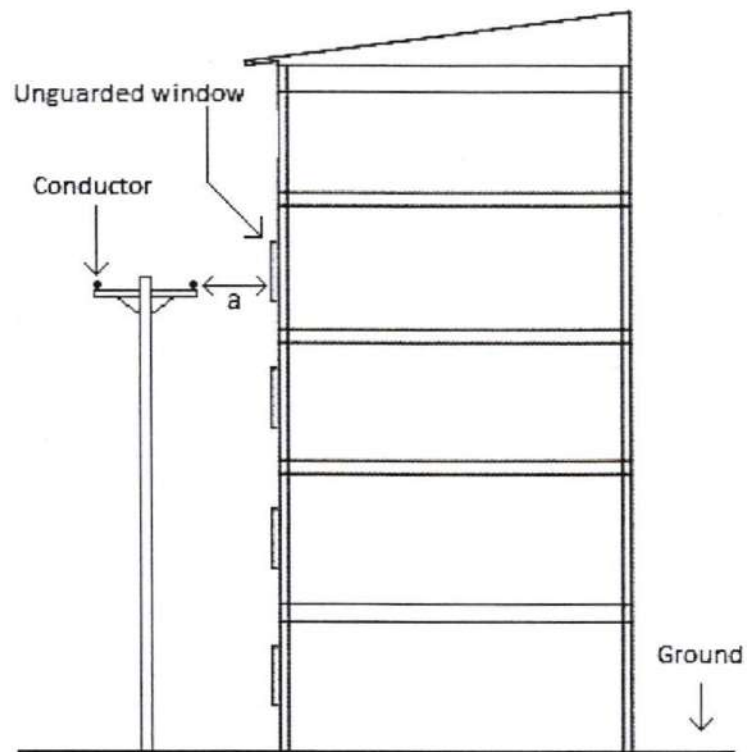


Figure 1a(2) To unguarded windows

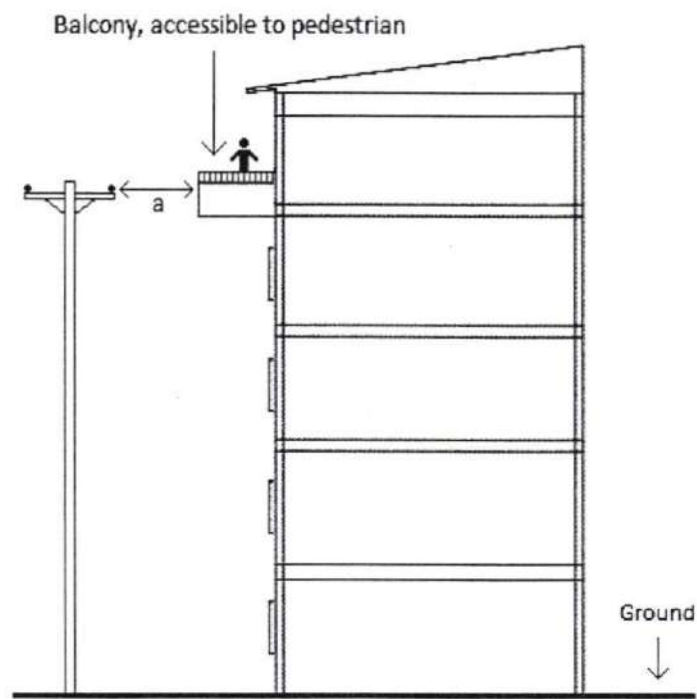
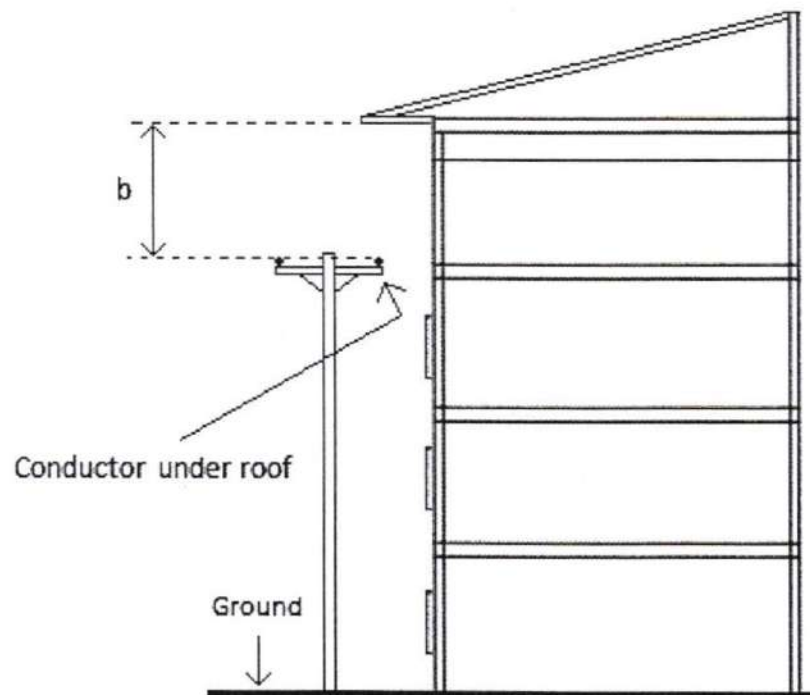


Figure 1a(3) To balconies and areas readily accessible to pedestrians



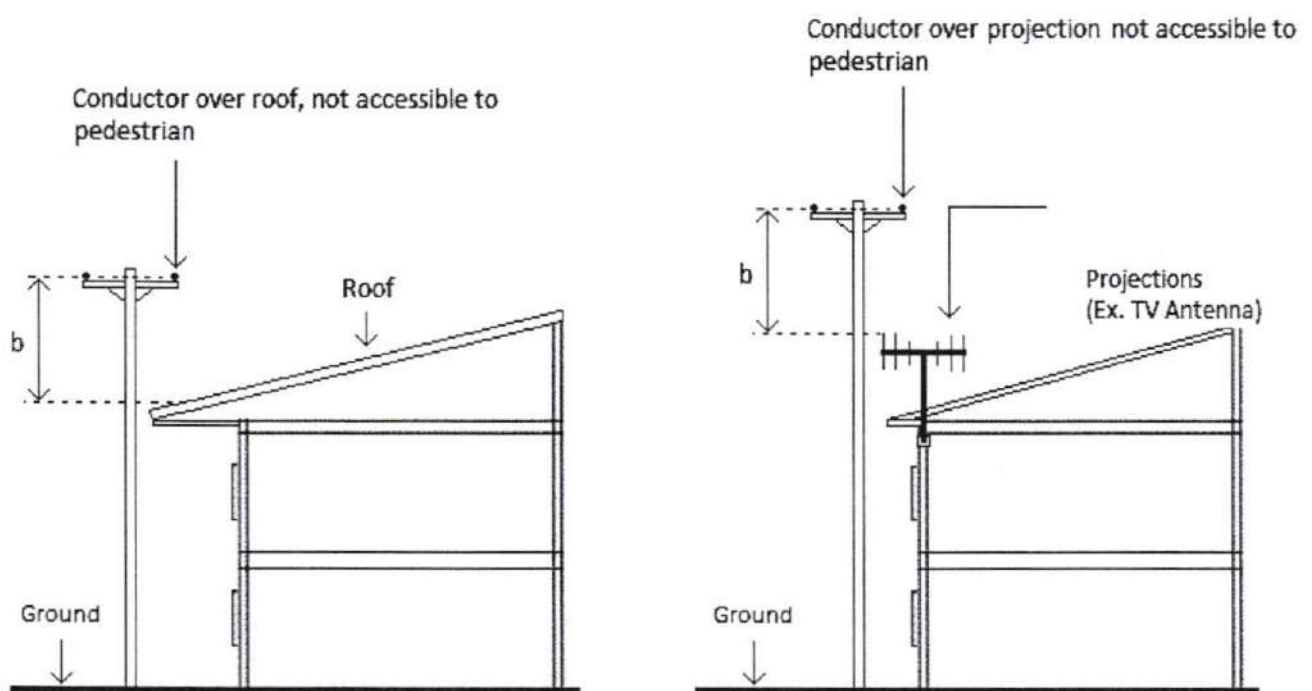


Figure 1b(1) Over or under roofs or projections not readily accessible to pedestrians

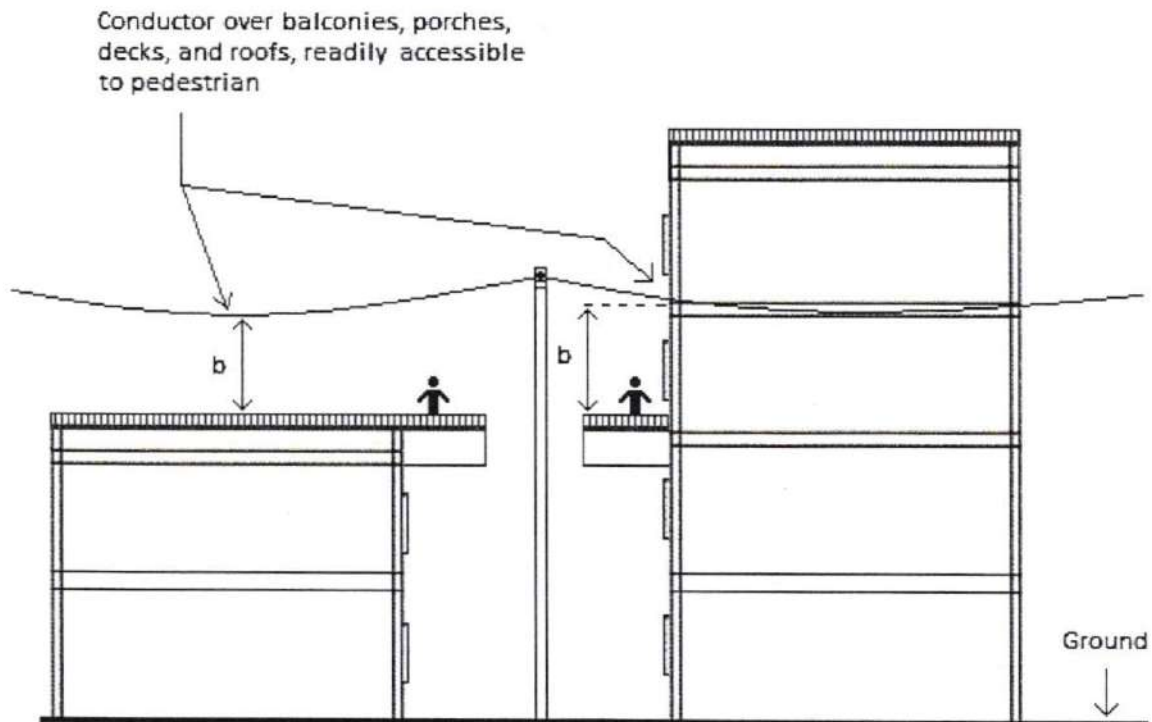


Figure 1b(2) Over or under balconies, porches, decks, and roofs, readily accessible to pedestrian

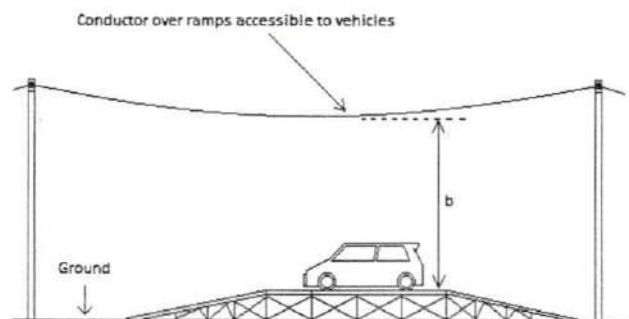
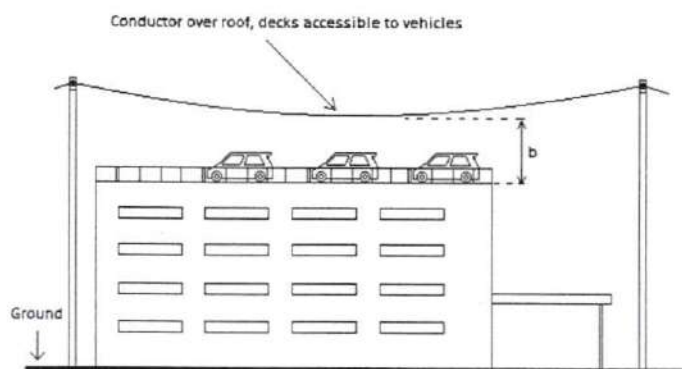


Figure 1b(3) Over roofs, ramps, decks, and loading docks accessible to vehicles but not subject to truck traffic

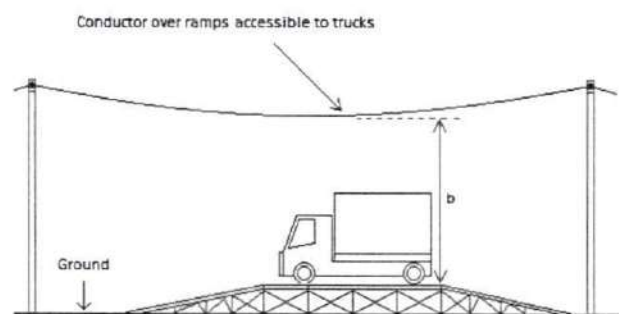
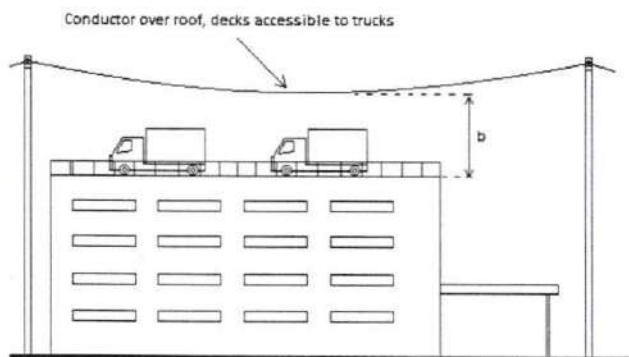
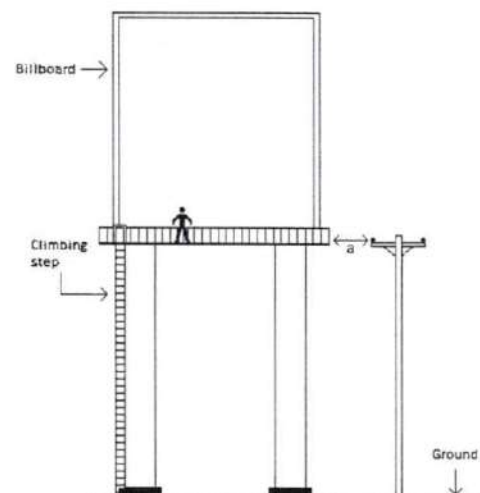
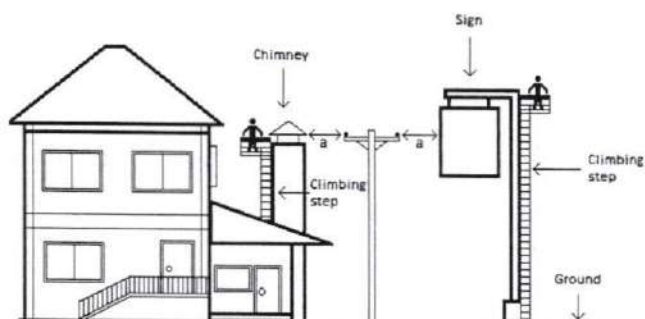


Figure 1b(4) Over roofs, ramps, decks, and loading docks accessible to trucks



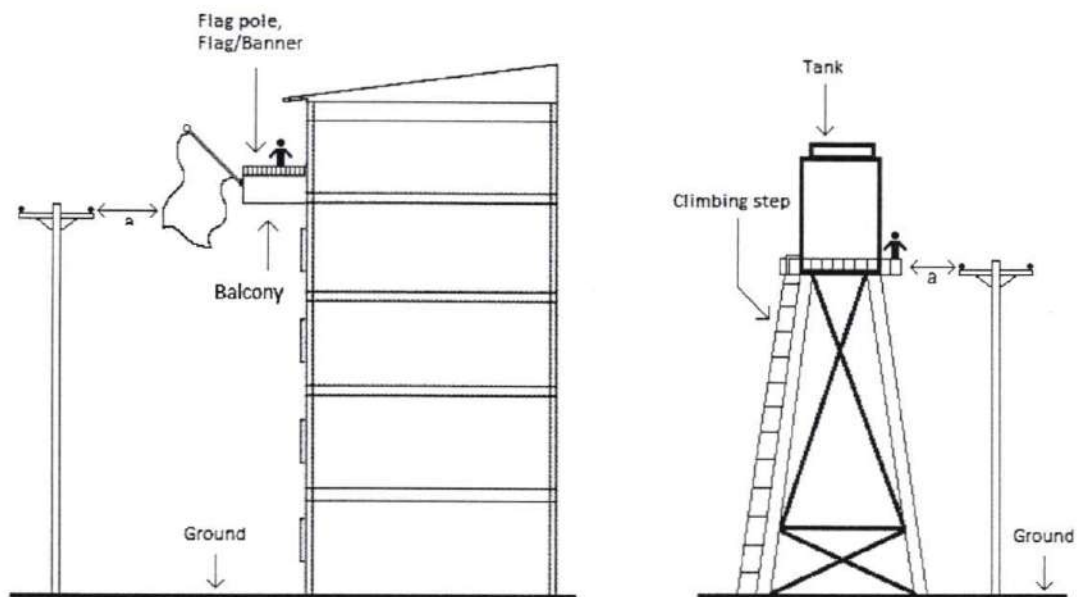
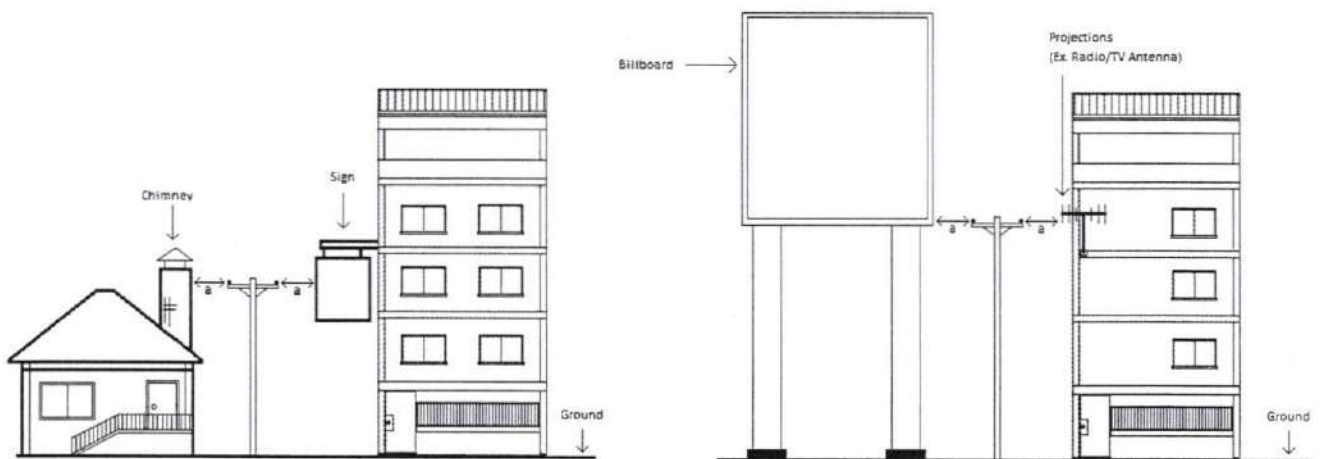


Figure 2a(1) To portions that are readily accessible to pedestrians



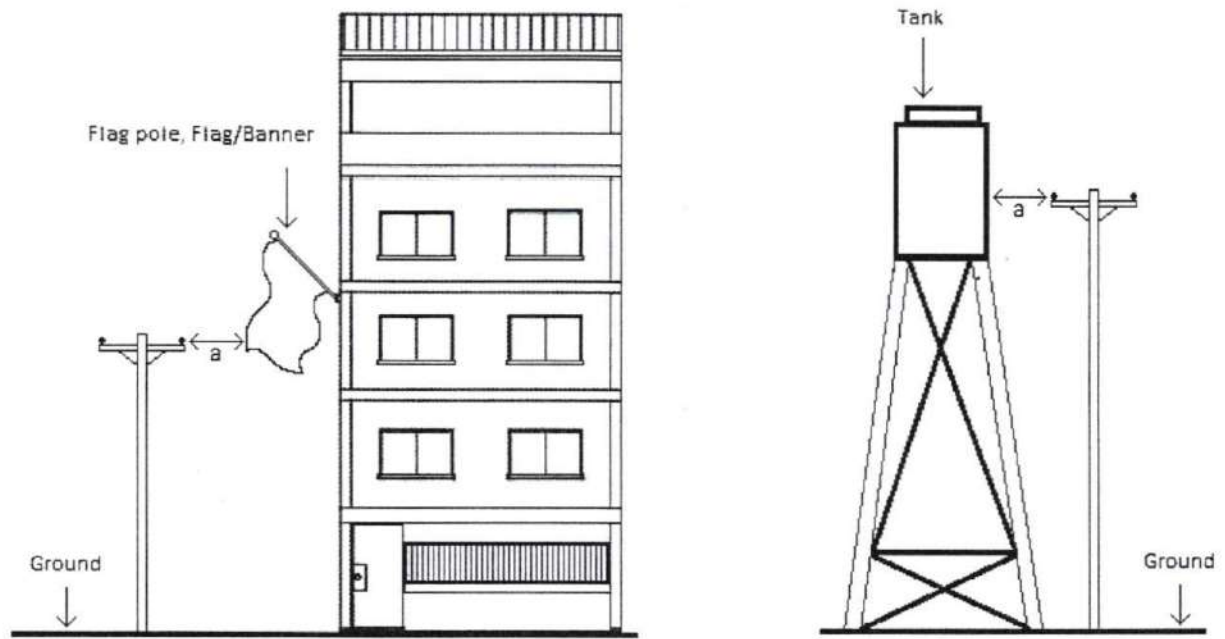


Figure 2a(1) To portions that are not readily accessible to pedestrians

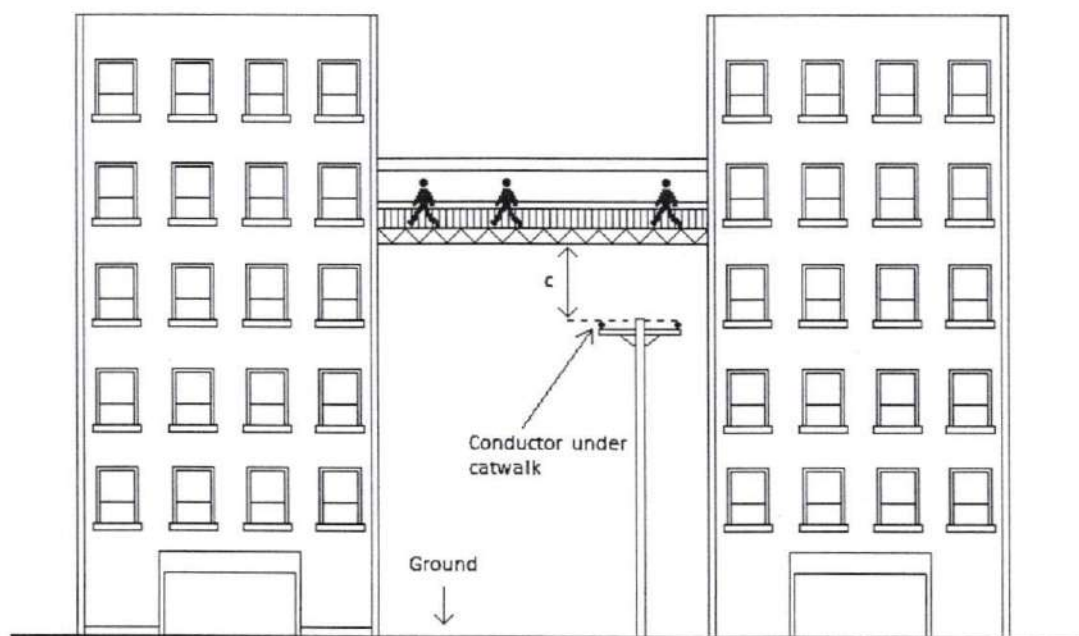
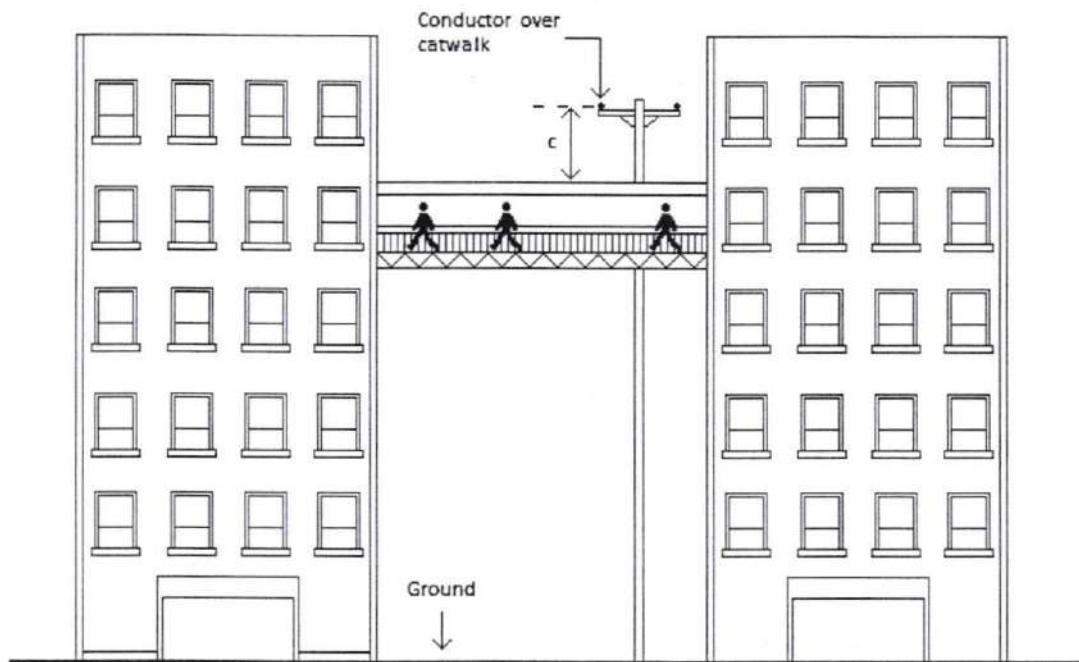


Figure 2b(1) Over or under catwalks and other surfaces upon which personnel walks

All other clearances, dimensions and specifications not enumerated or illustrated herein shall be referred to the latest version of the Philippine Electrical Code.

ANNEX B

Format of Notice for the Trimming, Pruning, Cutting or Clearing Activities Inside the PLC

(Letter Head/Name of Power Line Operator)

NOTICE

TO : DENR/PCA and LGU and other concerned government agencies
FOR : Cutting/Pruning/Trimming of Tall Growing Plants/Coconut Tree/s

Name of PLC and Location : _____
No. of Tall Growing Plants/Coconut Trees Affected: _____
Schedule of Activity: _____
Estimated Board Feet of Recoverable Lumber : _____
Name(s) and Estimated Quantity of Timber or Forest Products: _____
Name(s) of Private Persons Farmer/s Affected : _____
Name(s) of Service Contractor*, if any : _____
Name(s) of Consignee Lumberyard** and Address: _____

Attachments:

Name of Receiving Personnel: _____
Receiving Office: _____
Date and Time Received: _____

**Service Contractor may refer to chainsaw operator, lumber dealer and/or lumberyard operator.*

***May likewise pertain to the consignee lumber dealer or any person contracted to or intended by the PLO to receive the timber, forest products and/or coconut lumber as a product of the activities mentioned in this notice.*

The conduct of these activities without this Notice submitted to the relevant government agency in accordance with Republic Act No. 11361 and its IRR shall be deemed illegal and a violation of relevant laws, rules and regulations.

INVENTORY OF TIMBER, FOREST PRODUCTS AND/OR COCONUT LUMBER

Area of PLC: _____

Total Number of Timber, Forest Products or Coconut Lumbers: _____

[illegible]

ANNEX C

Format of Notice for the Removal, Dismantling or Demolition Activities of hazardous Improvements Inside the PLC

(Letter Head/Name of Power Line Operator)

NOTICE

TO : **DPWH/DHSUD and the concerned LGU and other relevant agencies**
FOR : **Removal/Dismantling/Demolition of Hazardous Improvements**

Name of PLC and Location : _____
No. of Structures/ Buildings/Improvements Affected: _____
Schedule of Activity: _____
Estimated Total Area Affected: _____
Estimated Quantity of Potential Debris: _____
Name(s) of Private Property Owner/s Affected : _____
Name(s) of Service Contractor, if any : _____
Estimated number of workers and equipment to be used: _____
Estimated number of days to complete the removal, dismantling or demolition activity within the PLC: _____
Attachments: _____

Name of Receiving Personnel: _____
Receiving Office: _____
Date and Time Received: _____

The conduct of these activities without this Notice submitted to the relevant government agency in accordance with Republic Act No. 11361 and its IRR shall be deemed illegal and a violation of relevant laws, rules and regulations.